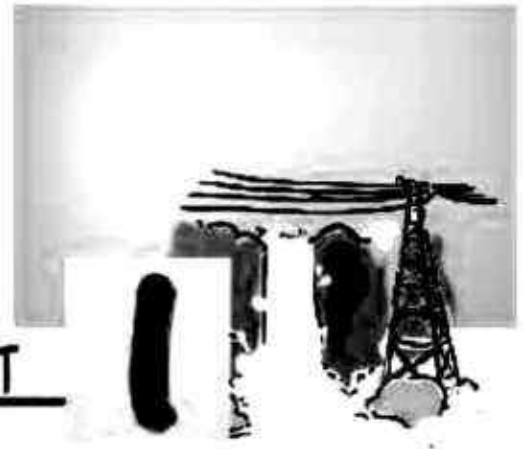


RESOURCES AND DEVELOPMENT

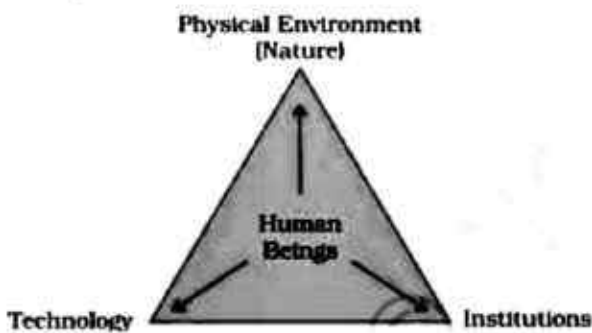


Can you identify and name the various items used in making life comfortable in our villages and towns. List the items and name the material used in their making.

The process of transformation of things available in our environment involves an inter- dependent relationship between nature, technology and institutions. Human beings interact with nature through technology and create institutions to accelerate their economic development.

Everything available in our environment which can be used to satisfy our needs, provided, it is technologically accessible, economically feasible and culturally acceptable can be termed as 'Resource'.

Do you think that resources are free gifts of nature as is assumed by many? They are not. Resources are a function of human activities. Human beings themselves are essential components of resources. They transform material available in our environment into resources and use them. These resources can be classified in the following ways-



- (a) On the basis of origin - biotic and abiotic
- (b) On the basis of exhaustibility - renewable and non-renewable
- (c) On the basis of ownership - individual, community, national and international
- (d) On the basis of status of development - potential, developed stock and reserves.

Fig. 1.1: Interdependent relationship between nature, technology and institutions

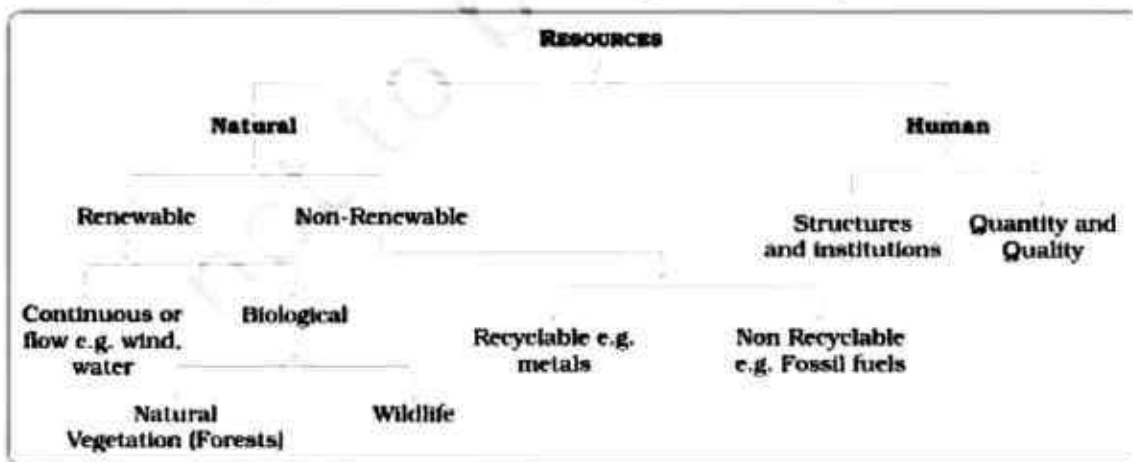


Fig. 1.2: Classification of resources

Identify at least two resources from each category.

TYPES OF RESOURCES

On the Basis of Origin

Biotic Resources: These are obtained from biosphere and have life such as human beings, flora and fauna, fisheries, livestock etc.

Abiotic Resources: All those things which are composed of non-living things are called abiotic resources. For example, rocks and metals.

On the Basis of Exhaustibility

Renewable Resources: The resources which can be renewed or reproduced by physical, chemical or mechanical processes are known as renewable or replenishable resources. For example, solar and wind energy, water, forests and wildlife, etc. The renewable resource may further be divided into continuous or flow (Fig. 1.2).

Non-Renewable Resources: These occur over a very long geological time. Minerals and fossil fuels are examples of such resources. These resources take millions of years in their formation. Some of the resources like metals are recyclable and some like fossil fuels cannot be recycled and get exhausted with their use.

On the Basis of Ownership

Individual Resources: These are also owned privately by individuals. Many farmers own land which is allotted to them by government against the payment of revenue. In villages there are people with land ownership but there are many who are landless. Urban people own plots, houses and other property. Plantation, pasture lands, ponds, water in wells etc. are some of the examples of resources ownership by individuals. Make a list of resources owned by your household.

Community Owned Resources: There are resources which are accessible to all the members of the community. Village commons (grazing grounds, burial grounds, village ponds, etc.) public parks, picnic spots,

playgrounds in urban areas are de facto accessible to all the people living there.

National Resources: Technically, all the resources belong to the nation. The country has legal powers to acquire even private property for public good. You might have seen roads, canals, railways being constructed on fields owned by some individuals. Urban Development Authorities get empowered by the government to acquire land. All the minerals, water resources, forests, wildlife, land within the political boundaries and oceanic area upto 12 nautical miles (22.2 km) from the coast termed as territorial water and resources therein belong to the nation.

International Resources: There are international institutions which regulate some resources. The oceanic resources beyond 200 nautical miles of the *Exclusive Economic Zone* belong to open ocean and no individual country can utilise these without the concurrence of international institutions.

Do you know?

Do you know that India has got the right to mine manganese nodules from the bed of the Indian Ocean from that area which lies beyond the exclusive economic zone. Identify some other resources which are international in nature.

On the Basis of the Status of Development

Potential Resources: Resources which are found in a region, but have not been utilised. For example, the western parts of India particularly Rajasthan and Gujarat have enormous potential for the development of wind and solar energy, but so far these have not been developed properly.

Developed Resources: Resources which are surveyed and their quality and quantity have been determined for utilisation. The development of resources depends on technology and level of their feasibility.

Stock: Materials in the environment which have the potential to satisfy human needs but human beings do not have the appropriate technology to access these, are included among



stock. For example, water is a compound of two inflammable gases; hydrogen and oxygen, which can be used as a rich source of energy. But we do not have the required technical 'know-how' to use them for this purpose. Hence, it can be considered as stock.

Reserves are the subset of the stock, which can be put into use with the help of existing technical 'know-how' but their use has not been started. These can be used for meeting future requirements. River water can be used for generating hydroelectric power but presently, it is being utilised only to a limited extent. Thus, the water in the dams, forests etc. is a reserve which can be used in the future.

Prepare a list of stock and reserve, resources that you are familiar with from your local area.

DEVELOPMENT OF RESOURCES

Resources are vital for human survival as well as for maintaining the quality of life. It was believed that resources are free gifts of nature. As a result, human beings used them indiscriminately and this has led to the following major problems.

- Depletion of resources for satisfying the greed of few individuals.
- Accumulation of resources in few hands, which, in turn, divided the society into two segments i.e. haves and have nots or rich and poor.
- Indiscriminate exploitation of resources has led to global ecological crises such as, global warming, ozone layer depletion, environmental pollution and land degradation.

1. Imagine, if the oil supply gets exhausted one day, how would this affect our life style?
2. Plan a survey in your colony/village to investigate people's attitude towards recycling of the domestic/agricultural wastes. Ask questions about :
 - (a) What do they think about resources they use?
 - (b) What is their opinion about the wastes, and its utilisation?
 - (c) Collage your results.

An equitable distribution of resources has become essential for a sustained quality of life and global peace. If the present trend of resource depletion by a few individuals and countries continues, the future of our planet is in danger.

Therefore, resource planning is essential for sustainable existence of all forms of life. Sustainable existence is a component of sustainable development.

Sustainable development

Sustainable economic development means 'development should take place without damaging the environment, and development in the present should not compromise with the needs of the future generations.'

Rio de Janeiro Earth Summit, 1992

In June 1992, more than 100 heads of states met in Rio de Janeiro in Brazil, for the first International Earth Summit. The Summit was convened for addressing urgent problems of environmental protection and socio-economic development at the global level. The assembled leaders signed the Declaration on Global Climatic Change and Biological Diversity. The Rio Convention endorsed the global Forest Principles and adopted *Agenda 21* for achieving Sustainable Development in the 21st century.

Agenda 21

It is the declaration signed by world leaders in 1992 at the United Nations Conference on Environment and Development (UNCED), which took place at Rio de Janeiro, Brazil. It aims at achieving global sustainable development. It is an agenda to combat environmental damage, poverty, disease through global co-operation on common interests, mutual needs and shared responsibilities. One major objective of the Agenda 21 is that every local government should draw its own local Agenda 21.

RESOURCE PLANNING

Planning is the widely accepted strategy for judicious use of resources. It has importance



in a country like India, which has enormous diversity in the availability of resources. There are regions which are rich in certain types of resources but are deficient in some other resources. There are some regions which can be considered self sufficient in terms of the availability of resources and there are some regions which have acute shortage of some vital resources. For example, the states of Jharkhand, Chhattisgarh and Madhya Pradesh are rich in minerals and coal deposits. Arunachal Pradesh has abundance of water resources but lacks in infrastructural development. The state of Rajasthan is very well endowed with solar and wind energy but lacks in water resources. The cold desert of Ladakh is relatively isolated from the rest of the country. It has very rich cultural heritage but it is deficient in water, infrastructure and some vital minerals. This calls for balanced resource planning at the national, state, regional and local levels.

Prepare a list of resources found in your state and also identify the resources that are important but deficit in your state.

Resource Planning in India

Resource planning is a complex process which involves : (i) identification and inventory of resources across the regions of the country. This involves surveying, mapping and qualitative and quantitative estimation and measurement of the resources. (ii) Evolving a planning structure endowed with appropriate technology, skill and institutional set up for implementing resource development plans. (iii) Matching the resource development plans with overall national development plans.

India has made concerted efforts for achieving the goals of resource planning right from the First Five Year Plan launched after Independence.

Find out

What resources are being developed in your surroundings by the community/village panchayats/ward level communities with the help of community participation?

The availability of resources is a necessary condition for the development of any region, but mere availability of resources in the absence of corresponding changes in technology and institutions may hinder development. There are many regions in our country that are rich in resources but these are included in economically backward regions. On the contrary there are some regions which have a poor resource base but they are economically developed.

Can you name some resource rich but economically backward regions and some resource poor but economically developed regions? Give reasons for such a situation.

The history of colonisation reveals that rich resources in colonies were the main attractions for the foreign invaders. It was primarily the higher level of technological development of the colonising countries that helped them to exploit resources of other regions and establish their supremacy over the colonies. Therefore, resources can contribute to development only when they are accompanied by appropriate technological development and institutional changes. India has experienced all this in different phases of colonisation. Therefore, in India, development, in general, and resource development in particular does not only involve the availability of resources, but also the technology, quality of human resources and the historical experiences of the people.

Conservation of Resources: Resources are vital for any developmental activity. But irrational consumption and over-utilisation of resources may lead to socio-economic and environmental problems. To overcome these problems, resource conservation at various levels is important. This had been the main concern of the leaders and thinkers in the past. For example, Gandhiji was very apt in voicing his concern about resource conservation in these words: "There is enough for everybody's need and not for any body's greed." He placed the greedy and selfish individuals and exploitative nature of modern technology as the root cause for resource depletion at the global level. He was against mass production and wanted to replace it with the production by the masses.

At the international level, the Club of Rome advocated resource conservation for the first time in a more systematic way in 1968. Subsequently, in 1974, Gandhian philosophy was once again presented by Schumacher in his book **Small is Beautiful**. The seminal contribution with respect to resource conservation at the global level was made by the Brundtland Commission Report, 1987. This report introduced the concept of 'Sustainable Development' and advocated it as a means for resource conservation, which was subsequently published in a book entitled **Our Common Future**. Another significant contribution was made at the Earth Summit at Rio de Janeiro, Brazil in 1992.

LAND RESOURCES

We live on land, we perform our economic activities on land and we use it in different ways. Thus, land is a natural resource of utmost importance. It supports natural vegetation, wild life, human life, economic activities, transport and communication systems. However, land is an asset of a finite magnitude, therefore, it is important to use the available land for various purposes with careful planning.

India has land under a variety of relief features, namely; mountains, plateaus, plains and islands. About 43 per cent of the land area is plain, which provides facilities for agriculture and industry. Mountains account for 30 per cent of the total surface area of the country and ensure perennial flow of some rivers, provide facilities for tourism and ecological aspects. About 27 per cent of the area of the country is the plateau region. It possesses rich reserves of minerals, fossil fuels and forests.

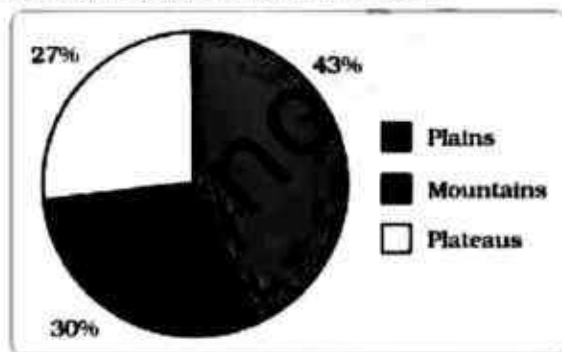


Fig 1.3: India : Land under important Relief Features

LAND UTILISATION

Land resources are used for the following purposes:

1. Forests
2. Land not available for cultivation
 - (a) Barren and waste land
 - (b) Land put to non-agricultural uses, e.g. buildings, roads, factories, etc.
3. Other uncultivated land (excluding fallow land)
 - (a) Permanent pastures and grazing land,
 - (b) Land under miscellaneous tree crops groves (not included in net sown area),
 - (c) Culturable waste land (left uncultivated for more than 5 agricultural years).
4. Fallow lands
 - (a) Current fallow-(left without cultivation for one or less than one agricultural year),
 - (b) Other than current fallow-(left uncultivated for the past 1 to 5 agricultural years).
5. Net sown area
Area sown more than once in an agricultural year plus net sown area is known as *gross cropped area*.

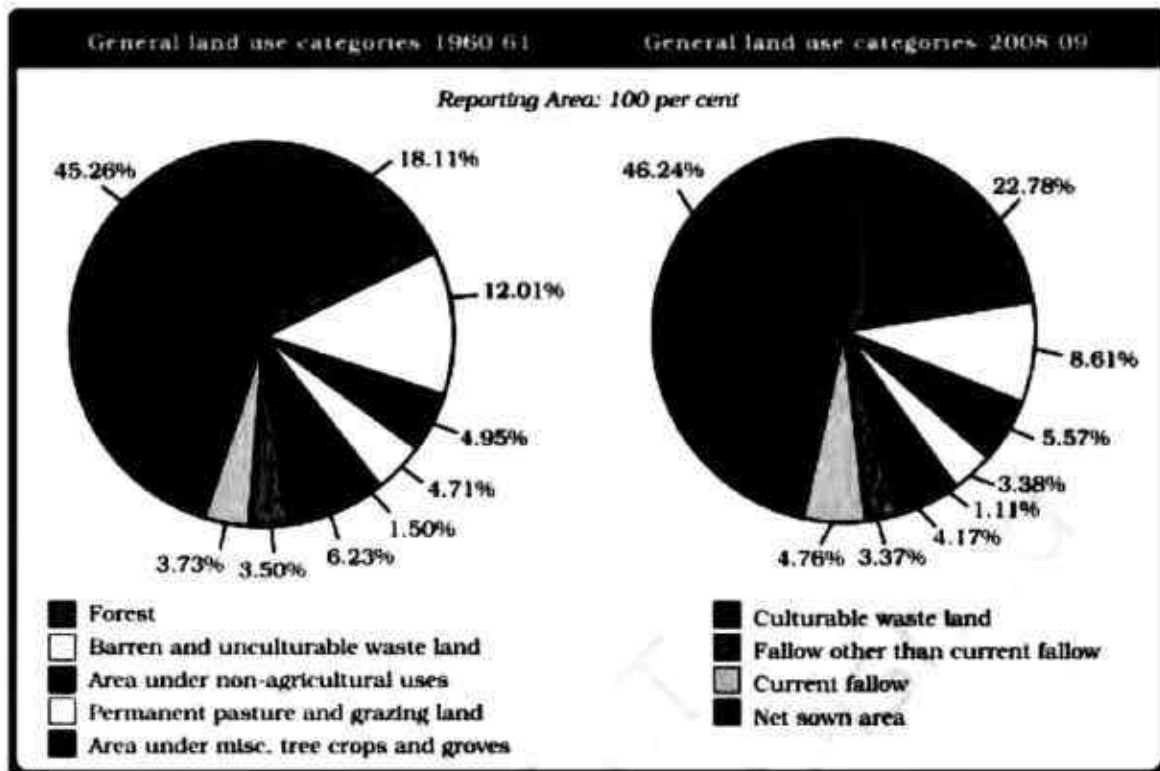
LAND USE PATTERN IN INDIA

The use of land is determined both by physical factors such as topography, climate, soil types as well as human factors such as population density, technological capability and culture and traditions etc.

Total geographical area of India is 3.28 million sq km. Land use data, however, is available only for 93 per cent of the total geographical area because the land use reporting for most of the north-east states except Assam has not been done fully. Moreover, some areas of Jammu and Kashmir occupied by Pakistan and China have also not been surveyed.

Try to do a comparison between the two pie charts (Fig. 1.4) given for land use and find out why the net sown area and the land under forests have changed from 1960-61 to 2008-09 very marginally.





Source : Directorate of Economics and Statistics, Ministry of Agriculture, 2008-09

Fig. 1.4

The land under permanent pasture has also decreased. How are we able to feed our huge cattle population on this pasture land and what are the consequences of it? Most of the other than the current fallow lands are either of poor quality or the cost of cultivation of such land is very high. Hence, these lands are cultivated once or twice in about two to three years and if these are included in the net sown area then the percentage of NSA in India comes to about 54 per cent of the total reporting area.

The pattern of net sown area varies greatly from one state to another. It is over 80 per cent of the total area in Punjab and Haryana and less than 10 per cent in Arunachal Pradesh, Mizoram, Manipur and Andaman Nicobar Islands.

Find out reasons for the low proportion of net sown area in these states.

Forest area in the country is far lower than the desired 33 per cent of geographical area, as it was outlined in the National Forest

Policy (1952). It was considered essential for maintenance of the ecological balance. The livelihood of millions of people who live on the fringes of these forests depends upon it. A part of the land is termed as waste land and land put to other non-agricultural uses. Waste land includes rocky, arid and desert areas and land put to other non-agricultural uses includes settlements, roads, railways, industry etc. Continuous use of land over a long period of time without taking appropriate measures to conserve and manage it, has resulted in land degradation. This, in turn, has serious repercussions on society and the environment.

LAND DEGRADATION AND CONSERVATION MEASURES

We have shared our land with the past generations and will have to do so with the future generations too. Ninety-five per cent of our basic needs for food, shelter and clothing

are obtained from land. Human activities have not only brought about degradation of land but have also aggravated the pace of natural forces to cause damage to land.

At present, there are about 130 million hectares of degraded land in India. Approximately, 28 per cent of it belongs to the category of forest degraded area, 56 per cent of it is water eroded area and the rest is affected by saline and alkaline deposits. Some human activities such as deforestation, over grazing, mining and quarrying too have contributed significantly in land degradation.

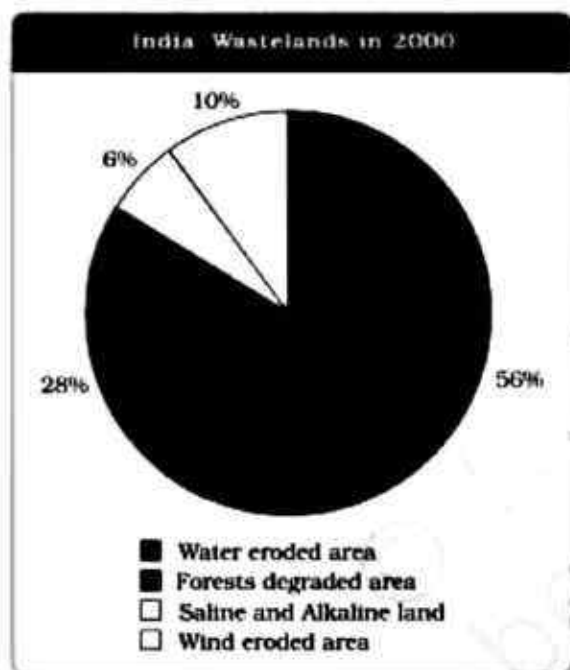


Fig. 1.5

Mining sites are abandoned after excavation work is complete leaving deep scars and traces of over-burdening. In states like Jharkhand, Chhattisgarh, Madhya Pradesh and Odisha deforestation due to mining have caused severe land degradation. In states like Gujarat, Rajasthan, Madhya Pradesh and Maharashtra overgrazing is one of the main reasons for land degradation. In the states of Punjab, Haryana, western Uttar Pradesh, over irrigation is responsible for land degradation due to water logging leading to increase in salinity and

alkalinity in the soil. The mineral processing like grinding of limestone for cement industry and calcite and soapstone for ceramic industry generate huge quantity of dust in the atmosphere. It retards the process of infiltration of water into the soil after it settles down on the land. In recent years, industrial effluents as waste have become a major source of land and water pollution in many parts of the country.

There are many ways to solve the problems of land degradation. Afforestation and proper management of grazing can help to some extent. Planting of shelter belts of plants, control on over grazing, stabilisation of sand dunes by growing thorny bushes are some of the methods to check land degradation. Proper management of waste lands, control of mining activities, proper discharge and disposal of industrial effluents and wastes after treatment can reduce land and water degradation in industrial and suburban areas.

SOIL AS A RESOURCE

Soil is the most important renewable natural resource. It is the medium of plant growth and supports different types of living organisms on



Fig. 1.6: Soil Profile

the earth. The soil is a living system. It takes millions of years to form soil upto a few cm in depth. Relief, parent rock or bed rock, climate, vegetation and other forms of life and time are important factors in the formation of soil. Various forces of nature such as change in temperature, actions of running water, wind and glaciers, activities of decomposers etc. contribute to the formation of soil. Chemical and organic changes which take place in the soil are equally important. Soil also consists of organic (humus) and inorganic materials (Fig. 1.6).

On the basis of the factors responsible for soil formation, colour, thickness, texture, age, chemical and physical properties, the soils of India can be classified in different types.

Classification of Soils

India has varied relief features, landforms, climatic realms and vegetation types. These have contributed in the development of various types of soils.

Alluvial Soils

This is the most widely spread and important soil. In fact, the entire northern plains are made of alluvial soil. These have been deposited by three important Himalayan river systems- the Indus, the Ganga and the Brahmaputra. These soils also extend in Rajasthan and Gujarat through a narrow corridor. Alluvial soil is also found in the eastern coastal plains particularly in the deltas of the Mahanadi, the Godavari, the Krishna and the Kaveri rivers.



Fig. 1.7: Alluvial Soil

The alluvial soil consists of various proportions of sand, silt and clay. As we move inland towards the river valleys, soil particles appear some what bigger in size. In the upper

reaches of the river valley i.e. near the place of the break of slope, the soils are coarse. Such soils are more common in piedmont plains such as **Duars, Chos and Terai**.

Apart from the size of their grains or components, soils are also described on the basis of their age. According to their age alluvial soils can be classified as old alluvial (**Bangar**) and new alluvial (**Khadar**). The **bangar** soil has higher concentration of *kanker* nodules than the **Khadar**. It has more fine particles and is more fertile than the **bangar**.

Alluvial soils as a whole are very fertile. Mostly these soils contain adequate proportion of potash, phosphoric acid and lime which are ideal for the growth of sugarcane, paddy, wheat and other cereal and pulse crops. Due to its high fertility, regions of alluvial soils are intensively cultivated and densely populated. Soils in the drier areas are more alkaline and can be productive after proper treatment and irrigation.

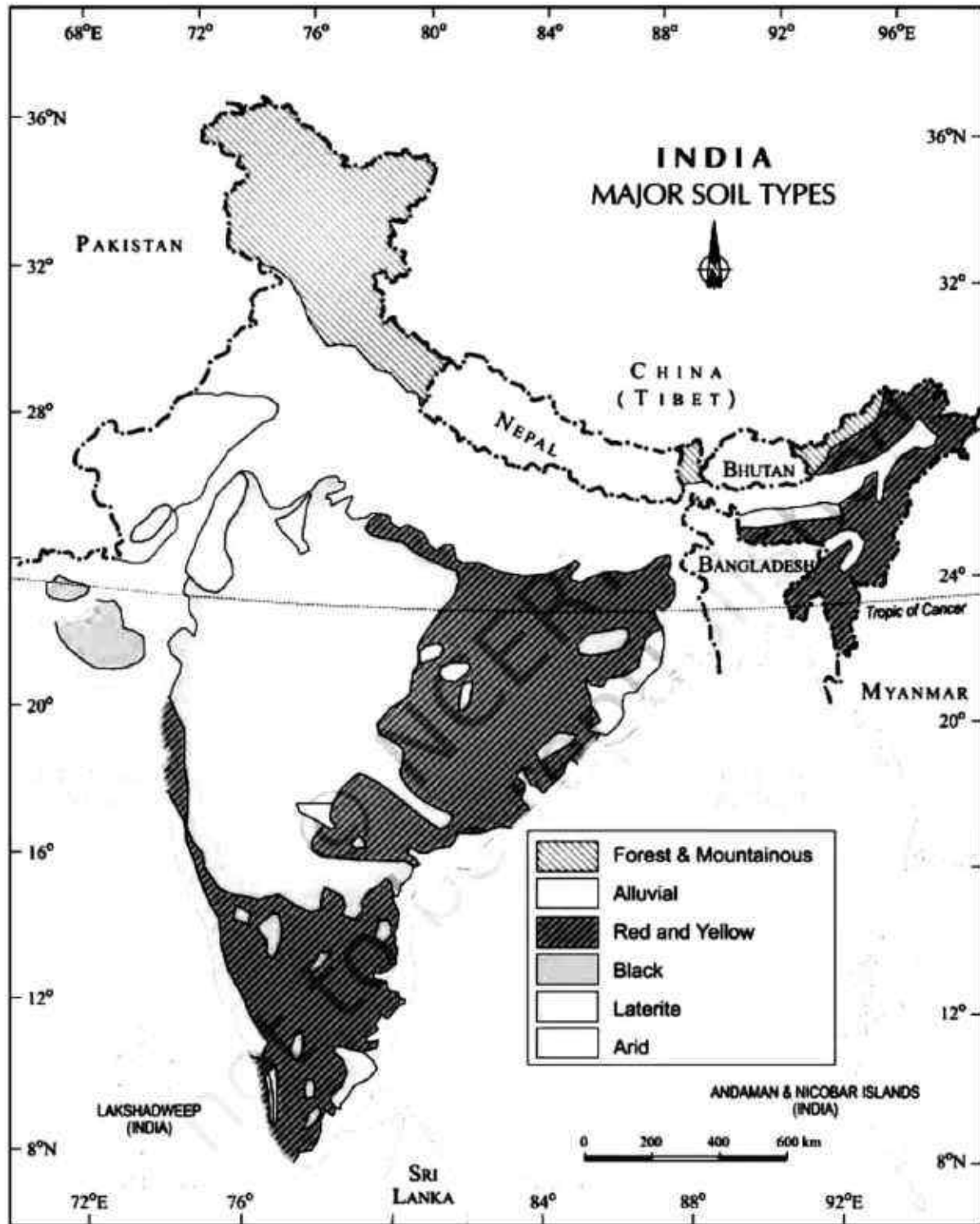
Black Soil

These soils are black in colour and are also known as *regur* soils. Black soil is ideal for growing cotton and is also known as *black cotton soil*. It is believed that climatic condition along with the parent rock material are the important factors for the formation of black soil. This type of soil is typical of the Deccan trap (*Basalt*) region spread over northwest Deccan plateau and is made up of lava flows. They cover the plateaus of Maharashtra, Saurashtra,



Fig. 1.8: Black Soil





India: Major Soil Types

Malwa, Madhya Pradesh and Chhattisgarh and extend in the south east direction along the Godavari and the Krishna valleys.

The black soils are made up of extremely fine i.e. clayey material. They are well-known for their capacity to hold moisture. In addition, they are rich in soil nutrients, such as calcium carbonate, magnesium, potash and lime. These soils are generally poor in phosphoric contents. They develop deep cracks during hot weather, which helps in the proper aeration of the soil. These soils are sticky when wet and difficult to work on unless tilled immediately after the first shower or during the pre-monsoon period.

Red and Yellow Soils

Red soil develops on crystalline igneous rocks in areas of low rainfall in the eastern and southern parts of the Deccan plateau. Yellow and red soils are also found in parts of Odisha, Chhattisgarh, southern parts of the middle Ganga plain and along the piedmont zone of the Western Ghats. These soils develop a reddish colour due to diffusion of iron in crystalline and metamorphic rocks. It looks yellow when it occurs in a hydrated form.

Laterite Soil

Laterite has been derived from the Latin word 'later' which means brick. The laterite soil develops in areas with high temperature and heavy rainfall. This is the result of intense leaching due to heavy rain. Humus content of



Fig. 1.9: Laterite Soil

the soil is low because most of the micro organisms, particularly the decomposers, like bacteria, get destroyed due to high temperature. Laterite soils are suitable for cultivation with adequate doses of manures and fertilizers. These soils are mainly found in Karnataka, Kerala, Tamil Nadu, Madhya Pradesh, and the hilly areas of Odisha and Assam. After adopting appropriate soil conservation techniques particularly in the hilly areas of Karnataka, Kerala and Tamil Nadu, this soil is very useful for growing tea and coffee. Red laterite soils in Tamil Nadu, Andhra Pradesh and Kerala are more suitable for crops like cashew nut.

Arid Soils

Arid soils range from red to brown in colour. They are generally sandy in texture and saline in nature. In some areas the salt content is very high and common salt is obtained by evaporating the water. Due to the dry climate, high temperature, evaporation is faster and the soil lacks humus and moisture. The lower horizons of the soil are occupied by *Kankar* because of the increasing calcium content downwards. The *Kankar* layer formations in the bottom horizons restrict the infiltration of water. After proper irrigation these soils become cultivable as has been in the case of western Rajasthan.



Fig. 1.10: Arid Soil

Forest Soils

These soils are found in the hilly and mountainous areas where sufficient rain forests are available. The soils texture varies

according to the mountain environment where they are formed. They are loamy and silty in valley sides and coarse grained in the upper slopes. In the snow covered areas of Himalayas, these soils experience denudation and are acidic with low humus content. The soils found in the lower parts of the valleys particularly on the river terraces and alluvial fans are fertile.

Soil Erosion and Soil Conservation

The denudation of the soil cover and subsequent washing down is described as soil erosion. The processes of soil formation and erosion, go on simultaneously and generally there is a balance between the two. Sometimes, this balance is disturbed due to human activities like deforestation, over-grazing, construction and mining etc., while natural forces like wind, glacier and water lead to soil erosion. The running water cuts through the clayey soils and makes deep channels as **gullies**. The land becomes unfit for cultivation and is known as **bad land**. In the Chambal basin such lands are called ravines. Sometimes



Fig. 1.11: Soil Erosion

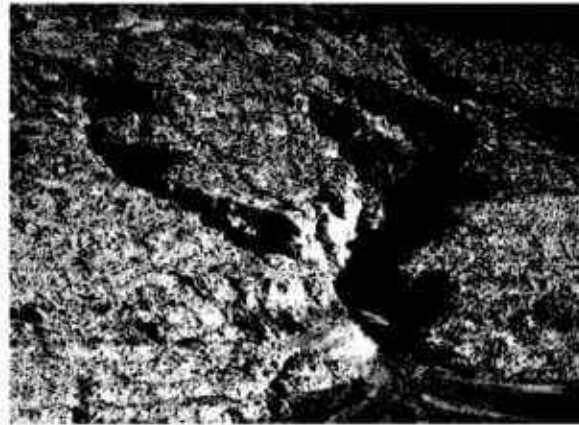


Fig. 1.12: Gully Erosion

water flows as a sheet over large areas down a slope. In such cases the top soil is washed away. This is known as **sheet erosion**. Wind blows loose soil off flat or sloping land known as wind erosion. Soil erosion is also caused due to defective methods of farming. Ploughing in a wrong way i.e. up and down the slope form channels for the quick flow of water leading to soil erosion.

Ploughing along the contour lines can decelerate the flow of water down the slopes. This is called contour ploughing. Steps can be cut out on the slopes making terraces. Terrace cultivation restricts erosion. Western and central Himalayas have well developed terrace farming. Large fields can be divided into strips. Strips of grass are left to grow between the crops. This breaks up the force of the wind. This method is known as strip cropping. Planting lines of trees to create shelter also works in a similar way. Rows of such trees are called shelter belts. These shelter belts have contributed significantly to the stabilisation of sand dunes and in stabilising the desert in western India.

State of India's Environment

- The village of Sukhomajri and the district of Jhabua have shown that it is possible to reverse land degradation. Tree density in Sukhomajri increased from 13 per hectare in 1976 to 1,272 per hectare in 1992;
- Regeneration of the environment leads to economic well-being, as a result of greater resource availability, improved agriculture and animal care, and



consequently, increased incomes. Average annual household income in Sukhomajri ranged from Rs 10,000-15,000 between 1979 and 1984;

- People's management is essential for ecological restoration. With people being made the decision-makers by the Madhya Pradesh government, 2.9 million hectares or about 1 per cent of India's land area, are being greened across the state through watershed management.



Source: The Citizens' Fifth Report, 1999 Centre of Science and Environment (CSE), New Delhi

EXERCISES EXERCISES EXERCISES EXERCISES EXERCISES

1. Multiple choice questions.

- Which one of the following type of resource is iron ore?
 - Renewable
 - Biotic
 - Flow
 - Non-renewable
- Under which of the following type of resource can tidal energy be put?
 - Replenishable
 - Human-made
 - Abiotic
 - Non-recyclable
- Which one of the following is the main cause of land degradation in Punjab?
 - Intensive cultivation
 - Deforestation
 - Over irrigation
 - Overgrazing
- In which one of the following states is terrace cultivation practised?
 - Punjab
 - Plains of Uttar Pradesh
 - Haryana
 - Uttarakhand
- In which of the following states is black soil found?
 - Jammu and Kashmir
 - Gujarat
 - Rajasthan
 - Jharkhand



2. Answer the following questions in about 30 words.

- (i) Name three states having black soil and the crop which is mainly grown in it.
- (ii) What type of soil is found in the river deltas of the eastern coast? Give three main features of this type of soil.
- (iii) What steps can be taken to control soil erosion in the hilly areas?
- (iv) What are the biotic and abiotic resources? Give some examples.

3. Answer the following questions in about 120 words.

- (i) Explain land use pattern in India and why has the land under forest not increased much since 1960-61?
- (ii) How have technical and economic development led to more consumption of resources?

PROJECT/ACTIVITY

1. Make a project showing consumption and conservation of resources in your locality.
2. Have a discussion in the class - how to conserve various resources used in your school.
3. Imagine if oil supplies get exhausted, how will this affect our life style?
4. Solve the puzzle by following your search horizontally and vertically to find the hidden answers.

S	F	G	S	F	O	B	R	O	M	S	U	A	P	J
Q	G	A	F	F	O	R	E	S	T	A	T	I	O	N
P	N	R	E	C	P	R	S	L	D	M	I	L	N	F
S	N	A	T	Q	X	U	O	V	A	I	O	L	A	L
O	D	E	I	D	R	J	U	J	L	D	B	N	B	D
T	G	H	M	I	N	E	R	A	L	S	A	X	M	W
B	V	J	K	M	E	D	C	R	U	P	F	M	H	R
L	A	T	E	R	I	T	E	M	V	A	Z	T	V	L
A	B	Z	O	E	N	M	F	T	I	S	D	L	R	C
C	G	N	N	S	Z	I	O	P	A	X	T	Y	J	H
K	J	G	K	D	T	D	C	S	L	S	E	G	E	W

- (i) Natural endowments in the form of land, water, vegetation and minerals.
- (ii) A type of non-renewable resource.
- (iii) Soil with high water retaining capacity.
- (iv) Intensively leached soils of the monsoon climate.
- (v) Plantation of trees on a large scale to check soil erosion.
- (vi) The Great Plains of India are made up of these soils.



Class - \bar{x}
Chapter - 1 (Geography)
(Study Materials)

* Resource :- Everything available in our environment which can be used to satisfy our needs, provided it is technologically accessible, economically feasible and culturally acceptable can be termed as "Resource".

* Types of Resources :

Resources can be classified in the following ways -

a) On the basis of origin

- Biotic
- Abiotic

b) On the basis of exhaustibility

- Renewable
- Non-renewable

c) On the basis of ownership

- Individual
- Community
- National
- International

d) On the basis of development

- Potential
- Developed
- Stock
- Reserves.

* Development of Resources

Resources are vital for human survival as well as for maintaining the quality of life. It was believed that resources are free gifts of nature. Human beings used them indiscriminately and this has led to the following major problems.

- a) Depletion of resources for satisfying the greed of few individuals.
- b) Accumulation of resources in few hands, which in turn divided the society into two segments i.e. haves and have nots or rich and poor.
- c) Indiscriminate exploitation of resources has led to global ecological crisis.

* Sustainable Development

Sustainable economic development means that development should take place without damaging the environment and development in the present should not compromise the needs of future generation.

* Land under important relief features in India

Plains - 43%

Mountains - 30%

Plateaus - 27%

* Soil Erosion

The denudation of the soil cover and subsequent washing down is soil erosion. Reasons for soil erosion includes

- a) Human activities like deforestation, overgrazing, construction, mining and defective method of farming etc.
- b) Natural forces like wind, glacier and water flow.

* Types of Erosion

- a) Gully erosion — The running water cuts through the clayey soils and makes deep channels known as gullies. This makes the land bad land and in Chambal basin such land is known as ravines.
- b) Sheet erosion — when the top soil over a large area is washed away, such type of erosion is known as sheet erosion.

* Methods to prevent soil erosion in hilly area

- Ploughing along the contour lines — contour ploughing
- Terrace cultivation
- Strip farming
- Shelter belts

* Soil and its types :-

a) Alluvial soils

- Found in Northern plains and eastern coastal plains.
- Fit for agricultural purpose
- Soils are rich in potash, phosphoric acid and lime.
- Alluvial soils are of two types - Bhangar and Khadar

b) Black soils

- Black in colour and are also known as Regur soils.
- Ideal for growing cotton
- Found in plateaus of Maharashtra, Saurashtra, Malwa, Madhya Pradesh and Chhattisgarh etc.
- Made up of extremely fine i.e. clayey material
- Rich in Calcium carbonate, Magnesium, Potash and lime.

c) Red and Yellow soils

- Found in the areas of low rainfall in the eastern and southern parts of Deccan plateau and also in parts of Odisha, Chhattisgarh, southern parts of middle Ganga plain and along piedmont zone of Western Ghats
- Develop a reddish colour due to diffusion of iron in crystalline and metamorphic rocks.

d) Laterite soils

- Develops in areas with high temperature and heavy rainfall.
- Found in Karnataka, Kerala, Tamil Nadu, Madhya Pradesh, and hilly areas of Odisha and Assam
- Low Humus content

e) Arid soils

- Found in Western parts of Rajasthan
- Lacks Humus and moisture
- Salt content is high

f) Forest soils

- Found in hilly and mountainous areas.
- Loamy and silty in valley sides
- Coarsed grained in the upper slopes.

Q1. Define Resources.

Ans:- Everything available in our environment which can be used to satisfy our needs, provided it is technologically accessible, economically feasible and culturally acceptable can be termed as resource.

Q2. What are potential resources?

Ans:- The resources which are found in a region, but have not been utilized.

Q3. Distinguish between stock and potential resources.

Ans:-

Stock	Potential
-------	-----------

(i) Things that have the potential to meet human needs but not yet accessed due to lack of appropriate technology

(i) Resources which are found in a region, but have not been utilized.

Q4. In which country was the first International Earth Summit organized?

Ans:- Brazil, Rio de Janeiro

Q5. What are the biotic and abiotic resources?
Give some examples.

Ans:- Biotic resources - These resources are obtained from biosphere and have life.
example - Human beings, Plants and Animals etc.

Abiotic resources - These resources are composed of non-living things.
example - Rocks and Minerals

Q6. "Indiscriminate use of resources has led to numerous problems". Justify the statement in three points.

Ans:- 1) Resources have been depleted for satisfying the greed of a few individuals. The

2) The resources get accumulated in a few hands, which in turn, divide the society into two segments i.e. haves and have nots

3) Indiscriminate exploitation of resources has led to global ecological crisis such as global warming, Ozone layer depletion, environmental pollution and degradation.

Q.7. "Resource planning is essential." Analyze the statement.

Ans. Resource planning is widely accepted strategy for judicious use of resources. Some of the resources like coal & petroleum etc. are available in limited quantity. Resources are depleting at faster rate. So, it needs a plan for sustained judicious use. Some of the resources have been accumulated by a handful of people and this restricts the equitable access to the resources and moreover the indiscriminate exploitation of resources is another factor that necessitates resource planning.

Q.8. Explain the three stages of resource planning in India.

Ans. Resource planning is a technique or skill of proper utilization of resources. It is a widely accepted strategy for judicious use of resources.

The three stages are as under -

1) Resource inventory: This involves surveying, mapping and qualitative and quantitative estimation and measurement of the resources across the country.

2) Evaluation: This includes evolving a planning structure endowed with appropriate technology, skill and institutional set up for implementing resource development plans.

3) This consist of matching the resource development plans with over all national development plans.

Q9. Why has the land under forests not increased much from 1960 - 1961?

Ans:- The land under the forest in India was not increased much since 1960 - 61 because the fringes of the forest were gradually been encroached by the agricultural sectors. The ever growing population of India didnot allow the natural vegetation to grow and spread as growing population needs more food as well as more areas for settlement. After Independence the government of India was busy setting socio - political and economic issues while forest development was not taken seriously.

MTWTFSSMTWTFSSMTWTFSSMTWTFSS FEB
•••••1234567891011121314151617181920212223242526272829• 2020

Q.10. What is soil erosion? What measures should be taken to control soil erosion?

Ans:- The denudation of soil cover and subsequent washing down of soil by running water, wind or glaciers etc. is termed as soil erosion.

The measures that has to be taken to control soil erosion are -

- i) Contour ploughing - Ploughing along the contour lines can decelerate the flow of water down the slopes.
- ii) Terrace cultivation - Steps can be cut on slopes making terraces. Terrace cultivation restricts erosion.
- iii) Strip cropping - Large fields can be divided into strips. Strips of grass are left to grow between the crops.
- iv) Shelter belts - Planting trees along the wind direction so as to reduce wind speed as wind passes over the belt.

Q.11. Describe any five features of arid soil.

Ans:- Features of arid soils are as follows -

- i) Arid soils are sandy in texture and saline in nature.
- ii) This soil lacks in humus and moisture.
- iii) The lower horizons of the soil are occupied by kankar.
- iv) The kankar layer formations in the bottom horizons restricts the infiltration of water.
- v) After proper irrigation these soil become cultivable.

Q.12. How are alluvial soils formed? How is Bhanganar different from Khadar?

Ans:- Alluvial soils are formed due to sand, silt and clay particles deposited in the plains by the river systems.

Bhanganar is old alluvial soil while Khadar is new alluvial soil. Bhanganar has higher concentration of kankar nodules than Khadar. Khadar has more fine particles and is more fertile than Bhanganar.

HOME ASSIGNMENT

- Q1. What type of soil is found in the river deltas of the eastern coast? Give three main features of this type of soil.
- Q2. How have technical and economic development led to more consumption of resources?
- Q3. Write a short note on Laterite soil.
- Q4. In what purposes are land resources used?
- Q5. Draw a neat diagram of India Map and locate the following in a chart paper.
- i) Forest and Mountainous soil
 - ii) Alluvial soil
 - iii) Red and Yellow soil
 - iv) Black soil
 - v) Laterite soil
 - vi) Arid soil